



# 성남시계 산행

22

30  
( )

6

sunlin-p@hanmail.net  
kho6488@hanmail.net

300m

?

11

30-40

380

( )

2



Contents | 2

?! | 3

< >

| 8

| 16

## 김훈 원작 뮤지컬 남한산성

2009. 10. 9( ) - 11. 4( )





# 행정구역 통합이 궁금해요?!

Q A 2014 2010 2011 2009 2008 2009 2010 2011 2008 2009

2 3745 2010 2 3915  
2011 1 8829 5

Q A 1995 78 39

24842 32 8737 62 38

Q A 2010 7 15889 2 3472

Q A 2009 9 30 2009 10 50% 12 729-2283

2011 3

1	4,200	4. u- City	u- CCTV	u- City
2	15	5.	2	25,000
3	( )			
15	(4-5 )			
	30%			
		6.	( - )	

2008 2009



# 남한산성



4 10 9 2007 1636 KBS TV 11 4 1544-8117 (www.snart.or.kr) eks323@hanmail.net

10.24( )	2631 2581 3271 3161 3491 3501 3461 3471	10.30( )	2231 2241 2151 2161 2331 2341 2411 2421
10.25( )	4081 4091 4041 4061 2681 2691 2821 2831	10.31( )	2371 2381 3021 3031 4251 4261 4281 4291
10.26( )	2861 2891 2871 3061 3101 3111	11.1( )	3651 3671 4391 4401 4421 4431 4471 4481
10.27( )	2911 2921 3351 3361	11.3( )	2091 2121 2571 2591 3381 3391
10.28( )	2731 2751 2071 2081 2281 2291	11.4( )	3531 3541 3311 3321 3451 3421 3591 3601
10.29( )	2971 2981 3141 3151 3701 3711	11.5( )	3191 3201 4321 4331 4501 4511

10 29 - 31 729-2522-5



# IPTV

## IPTV 3



IPTV 9 30  
 IPTV(Internet Protocol Television)  
 21 4609 ( 140 )  
 2 (MOU)  
 IPTV , IPTV 3  
 QookTV, broad&tv, myLGtv IPTV 3  
 IPTV  
 IPTV IPTV 3  
 (CUG) IPTV  
 IPTV 782-3000

## 2009

11 15 11  
 (www.oklife.go.kr)  
 729-2823  
 5  
 5  
 3 500  
 9  
 11 9-13 12 1-2  
 12 ( )  
 10 ( ) 23 1 5  
 729-2596




3  
 3 500-1 160  
 ( ) 3  
 32 9 22 ~10 4  
 140 3 729-5707



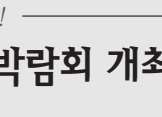
( )  
 생애체험 투어  
 교육·주민참여 프로그램  
 24 ( )  
 8 2  
 2-5  
 ( )  
 전시체험 투어 10 8 2011  
 1  
 치매체험 투어 4-5 20  
 2126 1644-0891  
 (www.miraeseum.or.kr)  
 ninga0805@hanmail.net




( )  
 10 9 2  
 Ave Regina Coelorum 2  
 1993 50  
 10  
 10 9-10 36  
 2 729-5270

! 

Q A 10 B  
 15  
 B 3  
 A  
 A 580  
 A B  
 582 6  
 A


! 

### 2009 성남권 채용박람회 개최




11.17( ) 14:00-17:00  
 ( )  
 : 60  
 : 1500  
 : ( 60 )  
 :  
 : ( )  
 729-2851-8

729-2591-2  
 10  
 10 14  
 (02-2100-4040) G4C  
 (www.egov.go.kr)  
 729-2373

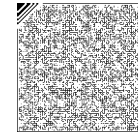
10~11 

지방세 Info

( 78%),  
 ( 500 ),  
 ARS(729-3880)  
 729-2711-8 729-5190-6  
 729-6190-7 729-7190-6  
 1588-2100, 080-709-3000

11.14( )-11.15( )  
 11.16( )  
 ( 2 ) 





2009

165



( ) 10 12 165 1 165  
10 12 10 23 12  
17

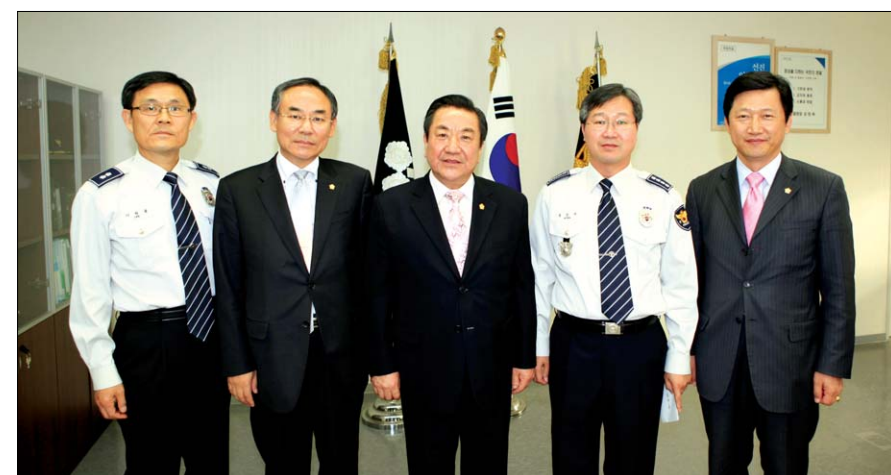
165

: 2009. 10. 12( ) - 10. 23( ) (12 )

[9 ]	
10. 20( )	2009
10:00	
[10 ]	
10. 21( )	( )
10:00	
10:30	
[11 ]	
10. 22( )	
10:00	
	2
[12 ]	
10. 23( )	( )
11:00	



( ) 9 22  
( )



( ) 2009 9 24 3

[1 ]	1
10. 12( )	165
11:00	2009
[2 ]	
10. 13( )	
10:00	
13:00	
[3 ]	
10. 14( )	2009
10:00	
[4 ]	
10. 15( )	2009
10:00	
[5 ]	
10. 16( )	2009
10:00	
[6 ]	
10. 17( )	( )
[7 ]	
10. 18( )	( )
[8 ]	
10. 19( )	2009
10:00	

		11
	6	40
	6-9	
	'Fun! Fun! English Story Telling'	
		( 2 )
		10 10



12  
) 34  
, 56  
34  
12  
781- 6184 / ikpark9420@hanmail.net



	17	28
45		15
		70

### 클릭, 청소년 뉴스 CLICK

( )

TV' 11 28 ( )

2009 9 Tong하는 English Kenny Chun

2001 (10:00-12:00) 1-2

781- 6184

14-19

6

10 28 ( )-11 14 ( ) 11 28 ( 10:00-12:00 ) 50

11 7-14

740- 5280- 1 (www.chamtv.com) 781- 6184

Fun! Fun! English Story Telling ( ) 10-11 (10:30-), !

6-9 어린이 음식문화 체험교실 3

10 60 11 6 20

Talk! Play! Love! English 기후변화와 에너지 교육 4

10 31 10 80

(11:00-12:00) 3-4 ( ) 756- 9898





# 행복한 실버 라이프

60

2

& ( )

(64 )

5 & 2 ( )

( )

e-

( ) IT ( )

1

IT ( 23 ) 5 ( ) ( )

100

(76 )

60

731- 3393- 4  
735- 8333  
712- 2508- 9  
yoonh1107@hanmail.net

731- 3393- 4 | www.sunobok.or.kr | 2178

752- 3366 | www.sswc.kr | 1 40

(11:30-12:30)

(09:00-11:00 10 , 14:30-17:30 30 )

751- 7450 | www.jwnoin.org | 3440

2 1 ( ) (09:00-17:00)

785- 9200 | www.bdsenior.or.kr | 253

Re-start

729- 2951- 6 | www.snfamily.or.kr | 7 ( 70 )

60 ( ) ( ) ( )

10

misop215@naver.com









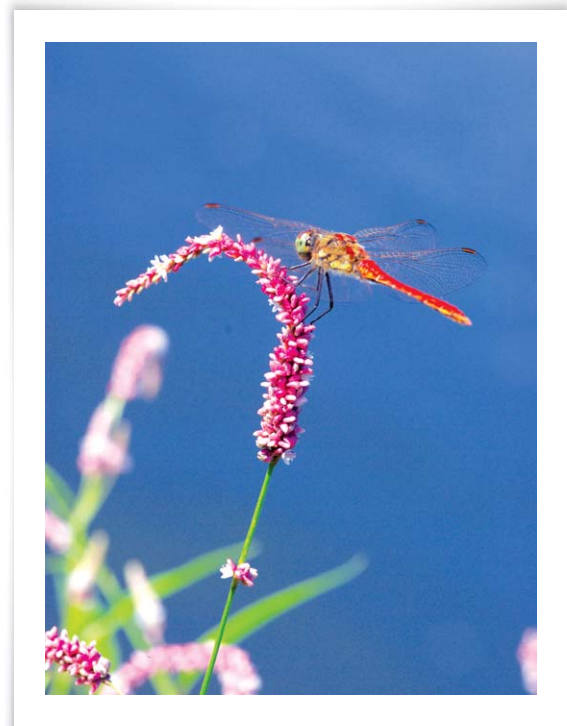
홍여새 한마리

80



2001

... 5 ... 200 ... 729-2075-6 : snnews@korea.kr



?

 <p>K-   vs FC 11.1( ) 3 FA   vs 11.8( ) 3</p>  <p>1982. 5. 9 183cm 70kg MF( ) 2009 19</p> <p>709- 4133</p>	<p>750- 4125</p> <p>: 24 ( )</p> <p>747- 5453- 5036</p>	<p><b>함께 지켜주세요</b></p> <p>손을 자주 씻어주세요</p> <p>기침이나 재채기가 나면, 휴지나 손수건으로 가려주세요!</p> <p>발열이나 호흡기 증상이 있다면 사람 많은 장소는 피해주세요!</p> <p>신종인플루엔자는 가벼운 병을 유발하기 때문에 경중의 건강한 사람은 광바이러스제 치료 없이 회복됩니다.</p> <p>건강한 사람은 의사의 판단에 따라 충분한 휴식과 수분섭취로 회복이 가능합니다.</p> <p>만성심폐질환, 천식, 당뇨, 비만, 임신부나 노인 분들은 인플루엔자 유사증상이 있으면 의사의 진료를 받으세요!</p>
<p>생활하수 우수관으로 유입 금지-</p> <p>공동주택 지하주차장 청소방법 개선-</p> <p>729- 3182</p>	<p>: 10.21( )-10.23( ) 09:00-18:00 (2 )</p> <p>02- 3701- 7507</p>	<p>69</p>  <p>: 11 11 ( ) 8</p> <p>: R 30000 A 20000 B 10000</p> <p>729- 4809</p>
<p>(www.ecoi.go.kr)</p> <p>729- 3141- 4</p>	<p>1</p> <p>: 10.25( ) 5</p> <p>: DJ, DOC, F(x),</p> <p>: KBS, MBC, SBS</p> <p>729- 4806</p>	<p>: 11.4( )~11.19( )</p> <p>: ( ), ( )</p> <p>: 10:30-18:00 ( )</p> <p>070- 7430- 3323 www.galleryart.com</p>
<p>(http://water.cans2l.net)</p> <p>729- 4145</p>	<p>40-60%</p> <p>: 10kg 2 2 ( ), 2 8 ( )</p> <p>1588- 1300 www.koreapost.go.kr</p> <p>725- 8014</p>	<p>: 729- 2075-6 snnews@korea.kr http://snvision.cans2l.net</p> <p>: &lt; &gt; 729- 2075-6</p>
<p>: 11.13( ) 13:00-15:00 6 12.11( ) 13:00-15:00 6</p> <p>786- 5324</p>		<p>&lt; &gt;</p>

2005	2	2003	CS3	2003	CS3	2	2007	( ~ )
112 - 1113	1116 - 1127	1113 - 1230	09:00-10:30 22 11:00-12:30 22 13:00-14:30 22 15:00-17:30 22 09:00-10:30 22 11:00-12:30 22 13:00-14:30 22 15:00-17:30 22	10.15( )	(4 ) 729- 5075	10.26( ) 09:00-09:30	10.26( ) 09:00-09:30	http://onsnlib.net 729- 4633
113 - 1126	1117 - 1128	113 - 1126	09:30-11:00 35 11:30-13:00 35 15:00-17:30 35 09:30-11:00 35 11:30-13:00 35 15:00-17:30 35 19:00-20:30 35	10.15( )	10.26( ) 09:00-09:30	10.26( ) 09:00-09:30	10.26( ) 09:00-09:30	http://onsnlib.net 729- 4633
113 - 1126	1117 - 1128	113 - 1126	09:00-11:00 30 11:30-13:00 30 14:00-15:30 30 16:00-17:30 30	10.26( )	10.26( ) 09:00-09:30	10.26( ) 09:00-09:30	10.26( ) 09:00-09:30	http://jwsnlib.net 752- 3916
113 - 1126	1117 - 1128	113 - 1126	09:00-11:00 30 11:30-13:00 30 14:00-15:30 30 16:00-17:30 30	10.26( )	10.26( ) 09:00-09:30	10.26( ) 09:00-09:30	10.26( ) 09:00-09:30	http://jwsnlib.net 752- 3916
113 - 1126	1117 - 1128	113 - 1126	09:00-11:00 30 11:30-13:00 30 14:00-15:30 30 16:00-17:30 30	10.26( )	10.26( ) 09:00-09:30	10.26( ) 09:00-09:30	10.26( ) 09:00-09:30	http://jwsnlib.net 752- 3916
113 - 1126	1117 - 1128	113 - 1126	09:00-11:00 30 11:30-13:00 30 14:00-15:30 30 16:00-17:30 30	10.26( )	10.26( ) 09:00-09:30	10.26( ) 09:00-09:30	10.26( ) 09:00-09:30	http://jwsnlib.net 752- 3916